

FELT S14 «STABEKK PARK»

NYVEIEN 30-32

GAMLE DRAMMENSVEI 33

v/ Sebastian Bjercke, R21 Arkitekter
og Paul Koefoed, Bonum

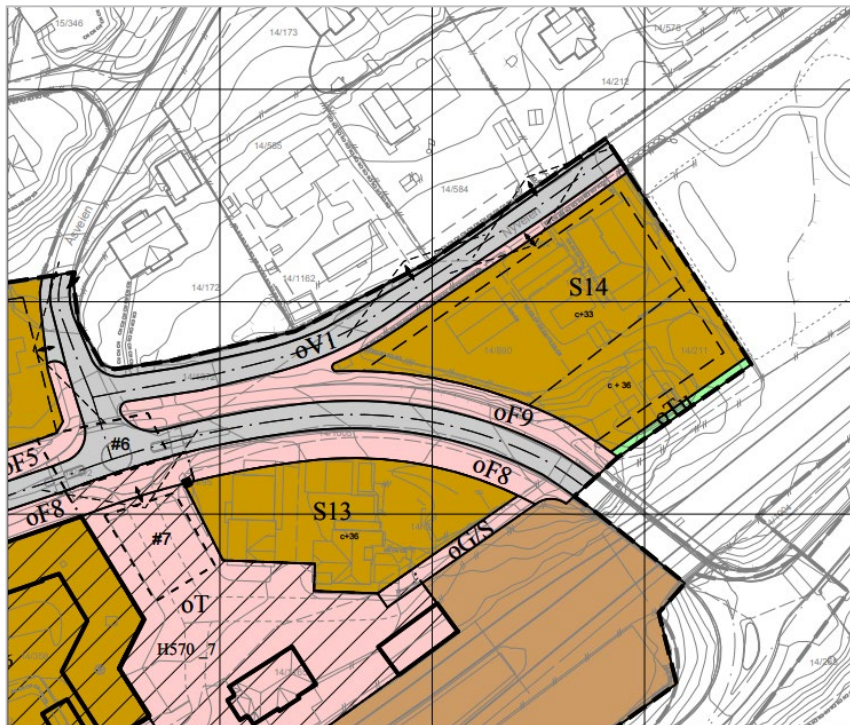
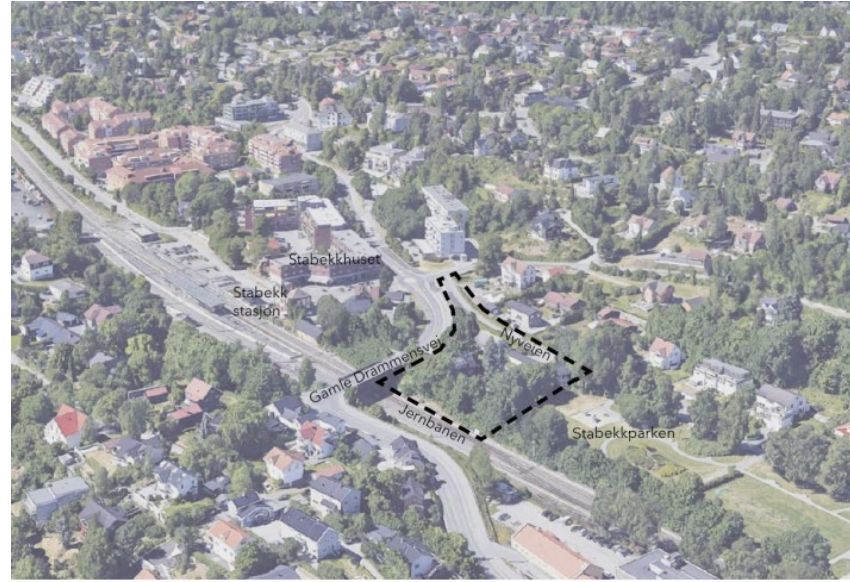
PRESENTASJON I PLANUTVALGET

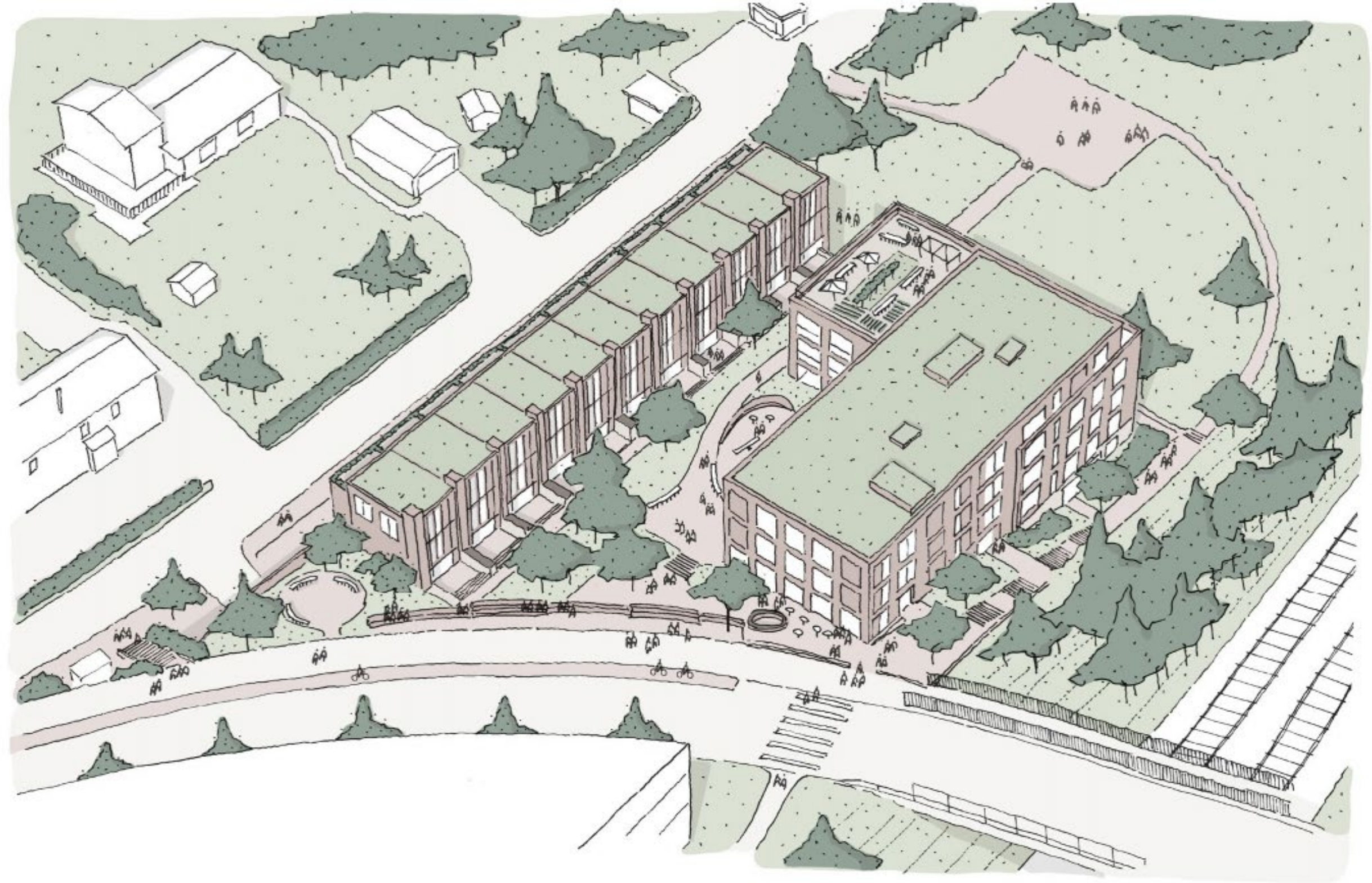
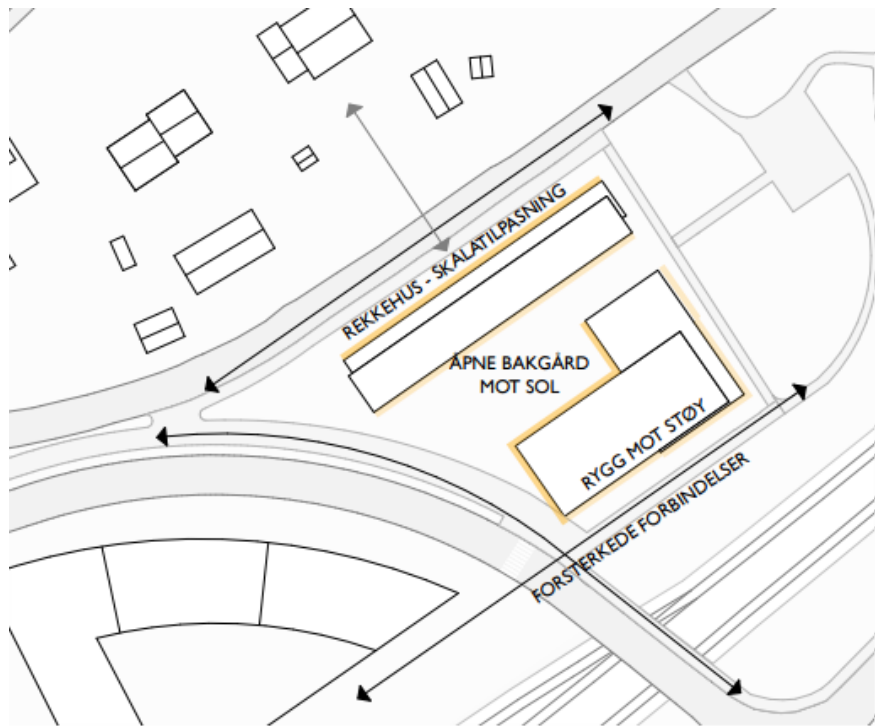
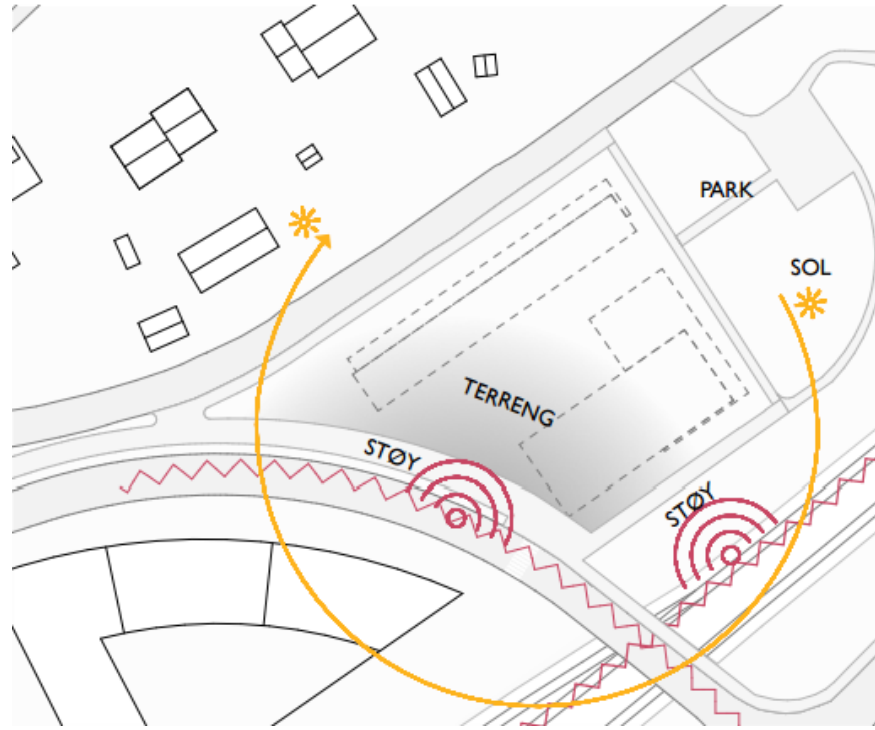
25. MAI 2023

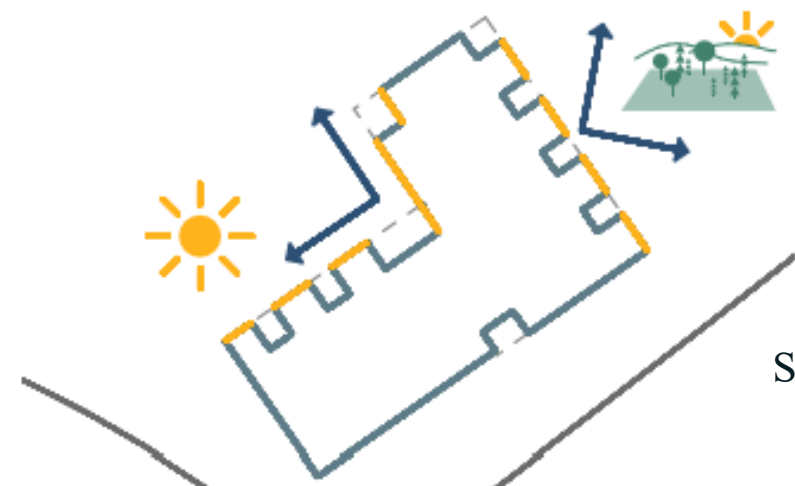




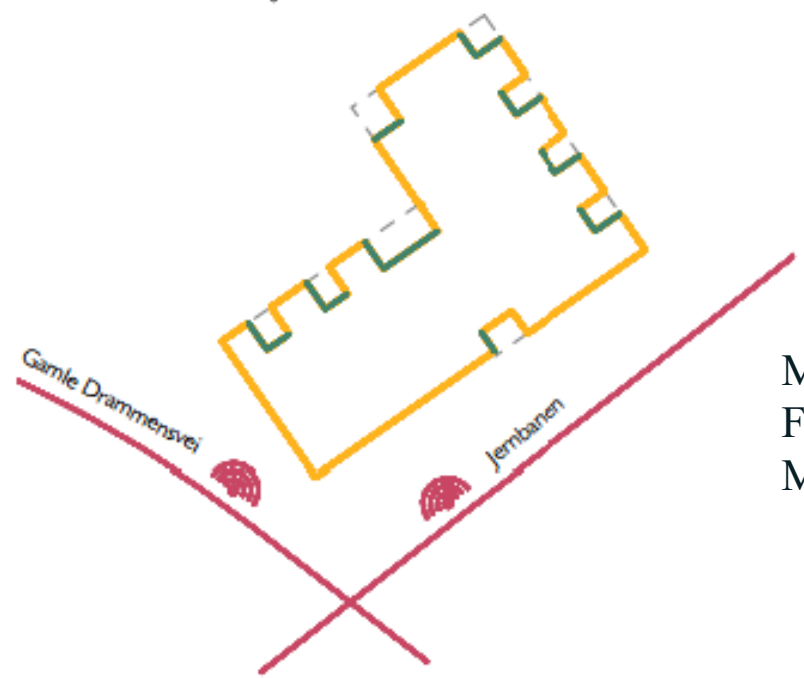
PLANOMRÅDET – FELT S14 – NYVEIEN 30-32 og GAMLE DRAMMENSVEIEN 33



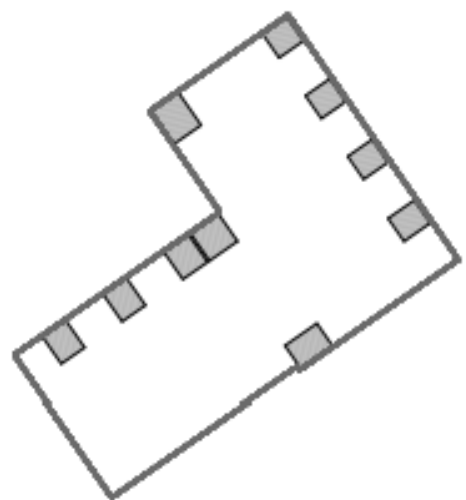




SOL OG UTSIKT



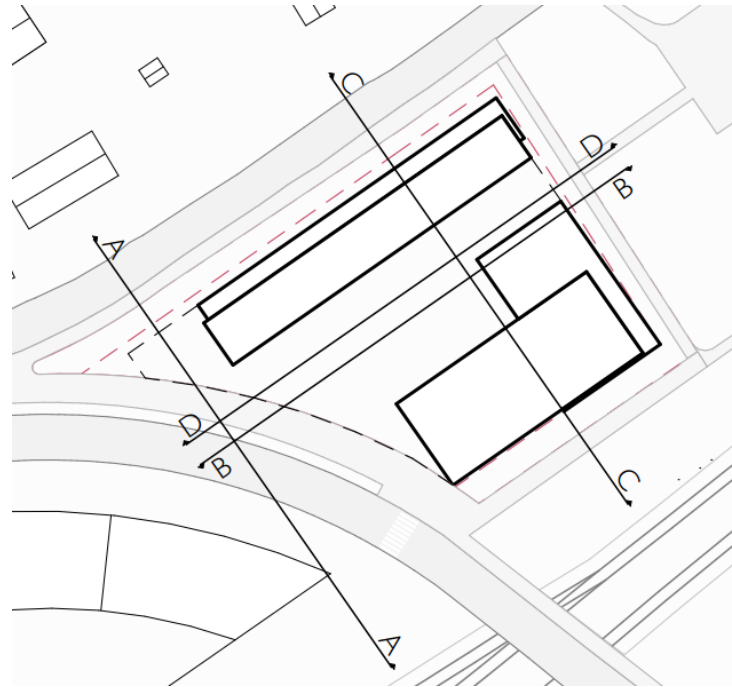
MER
FASADEAREAL –
MINDRE STØY



IINNTRUKNE
BALKONGER

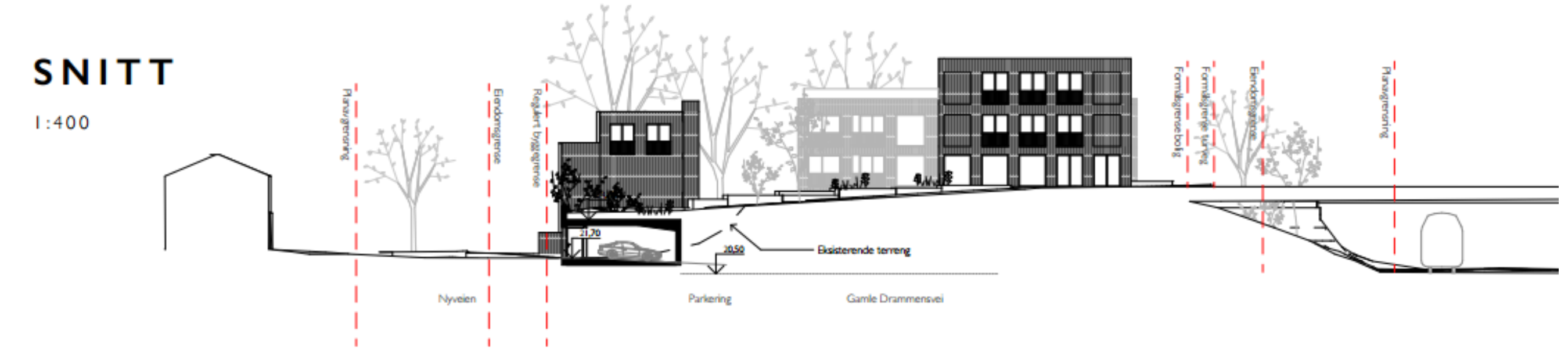


Illustrasjon fra bakgården



SNITT

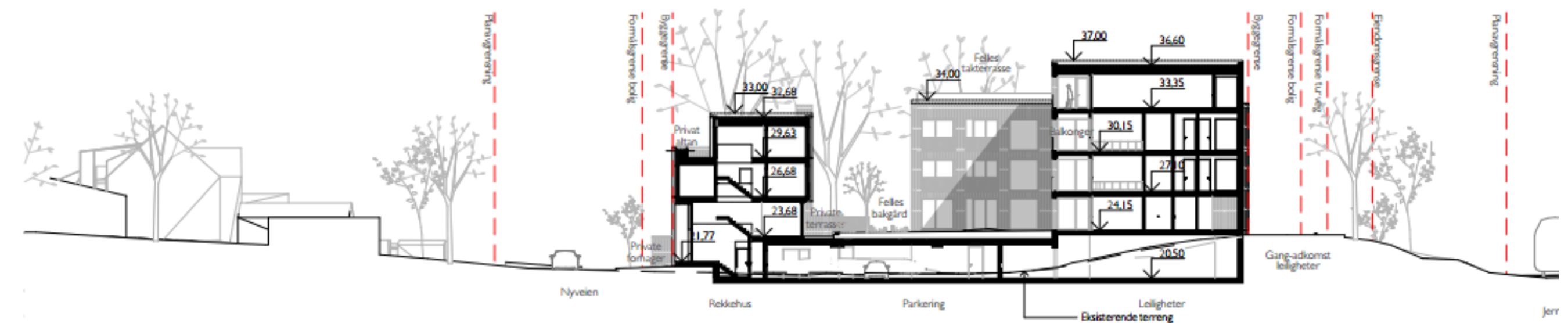
1:400



Snitt A



Snitt B



Snitt C



Stasjonstorget - Stabekkhuse og gamle stasjonen
Eksisterende bebyggelse mange forbinder med Stabekk i dag er en murverden med brun tegl.

Foto: Cato A. Marku/Multiconsult



Illustrasjon fra parken



Illustrasjon fra bakgården mot rekkehusene

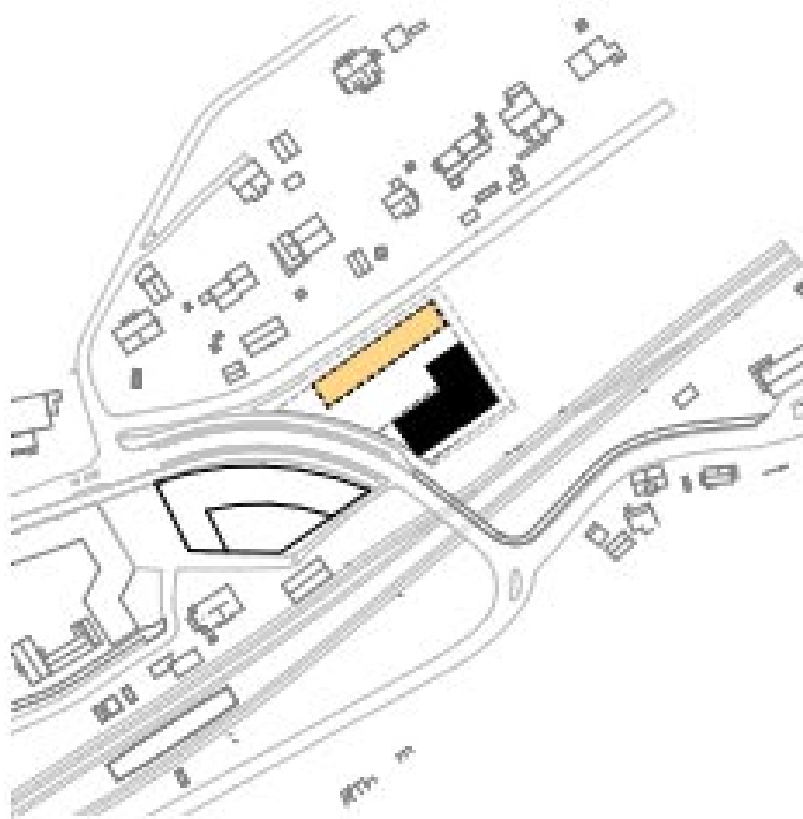


Carlsbergbyen, København



Frøytunveien, Bekkestua







FELT S14 «STABEKK PARK»

NYVEIEN 30-32

GAMLE DRAMMENSVEI 33